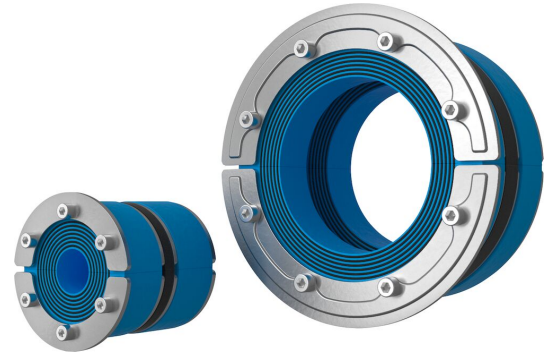




Sello Roxtec RS PPS/S

Sello para tubería de plástico ligero para la instalación desde un único lado.

El sello Roxtec RS PPS/S es una solución de sellado para aberturas con tuberías de plástico en zonas con clasificación contra incendios, como cubiertas y mamparos de acero. El sello garantiza un bloqueo completo del humo, las llamas y el agua en caso de incendio y está aprobado para la instalación desde un único lado. El sello se adapta a tuberías de diferentes tamaños gracias a las capas retirables. Para tuberías de plástico de hasta 119 mm.



- Ligero
- Rápido y sencillo de instalar
- Se adapta a cables y tuberías de diferentes tamaños

Características del producto



Calificación contra incendios



Estanco al agua



Estanco a gases

Estructura de instalación



Metal



Hormigón

Tipo de montaje



Hueco existente



Manguito existente

Calificaciones y certificados

Fuego

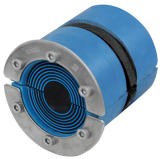
- CLASE A de acuerdo al estándar FTP IMO 2010
- Clasificación E/EI según EN 45545 E60

Estanquidad

- Gas: 2 bar (catastrófico)
- Agua: 4 bar (catastrófico)

Datos de los componentes de sellado

Componentes de sellado



Sello RS PPS/S



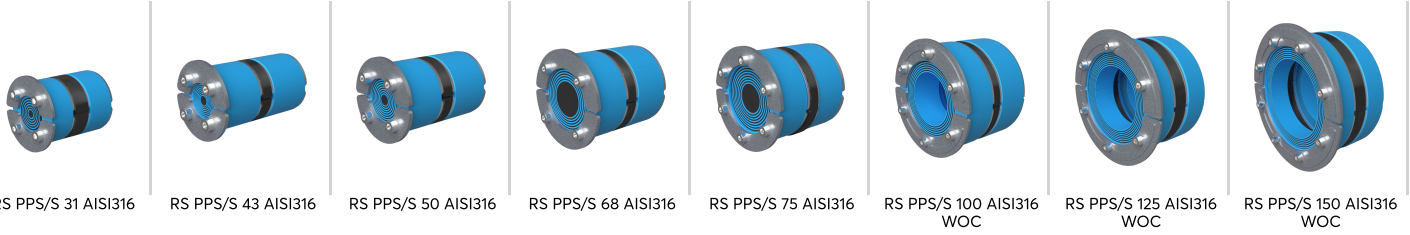
Lubricante Roxtec

Para obtener información detallada, visite [roxtec.com](https://www.roxtec.com).



Kits de sellos preconfigurados

mm/kg



Título	Configuración	Dimensiones de abertura Ø	Peso	N.º de art.
RS PPS/S 31 AISI316	1x (4.0-17.0)	31 - 32	0.09	PPSS000003121
RS PPS/S 43 AISI316	1x (4.0-23.0)	43 - 45	0.29	PPSS000004321
RS PPS/S 50 AISI316	1x (8.0-30.0)	50 - 52	0.37	PPSS000005021
RS PPS/S 68 AISI316	1x (26.0-48.0)	68 - 70	0.6	PPSS000006821
RS PPS/S 75 AISI316	1x (24.0-54.0)	75 - 77	0.6	PPSS000007521
RS PPS/S 100 AISI316 WOC	1x (48.0-70.0)	100 - 102	0.8	PPSS000010021
RS PPS/S 125 AISI316 WOC	1x (66.0-98.0)	125 - 127	1.4	PPSS000012521
RS PPS/S 150 AISI316 WOC	1x (93.0-119.0)	150 - 152	1.6	PPSS000015021

The product information provided by Roxtec does not release the purchaser of the Roxtec system, or part thereof, from the obligation to independently determine the suitability of the products for the intended process, installation and/or use. Roxtec gives no guarantee for the Roxtec system or any part thereof and assumes no liability for any loss or damage whatsoever, whether direct, indirect, consequential, loss of profit or otherwise, occurred or caused by the Roxtec systems or installations containing components not manufactured by an authorized manufacturer and/or occurred or caused by the use of the Roxtec system in a manner or for an application other than for which the Roxtec system was designed or intended. Roxtec expressly excludes any implied warranties of merchantability and fitness for a particular purpose and all other express or implied representations and warranties provided by statute or common law. User determines suitability of the Roxtec system for intended use and assumes all risk and liability in connection therewith. In no event shall Roxtec be liable for indirect, consequential, punitive, special, exemplary or incidental damages or losses. The Roxtec products are offered and sold in accordance with the conditions of the Roxtec General Terms of Sales. The latest version of the Roxtec General Terms of Sales can be downloaded from <https://www.roxtec.com/en/about-us/about-roxtec/general-terms-of-sales/> We reserve the right to make changes to the product and technical information without further notice. Any errors in print or entry are no claims for indemnity. The content of this publication is the property of Roxtec International AB and is protected by copyright. This document was generated on: 2024-04-06